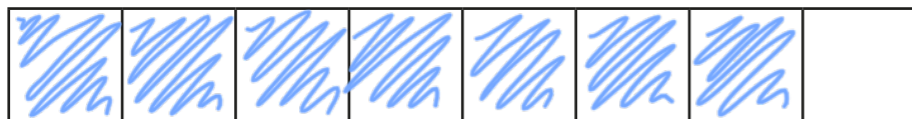


Compare and order fractions less than 1

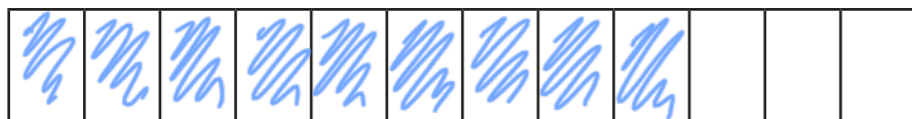


1 Write $<$, $>$ or $=$ to compare the fractions.

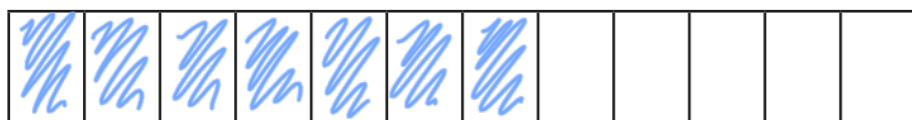
Use the bar models to help you.



$$\frac{7}{8} \bigcirc \frac{3}{4}$$



$$\frac{9}{12} \bigcirc \frac{3}{4}$$



$$\frac{7}{12} \bigcirc \frac{2}{3}$$

2 Write $<$, $>$ or $=$ to compare the fractions.

$$\text{a) } \frac{1}{5} \bigcirc \frac{4}{15}$$

$$\text{g) } \frac{2}{9} \bigcirc \frac{1}{3}$$

$$\text{b) } \frac{2}{5} \bigcirc \frac{4}{15}$$

$$\text{h) } \frac{4}{9} \bigcirc \frac{1}{3}$$

$$\text{c) } \frac{2}{5} \bigcirc \frac{6}{15}$$

$$\text{i) } \frac{4}{12} \bigcirc \frac{1}{3}$$

$$\text{d) } \frac{2}{3} \bigcirc \frac{6}{15}$$

$$\text{j) } \frac{8}{12} \bigcirc \frac{2}{3}$$

$$\text{e) } \frac{2}{3} \bigcirc \frac{6}{12}$$

$$\text{k) } \frac{8}{12} \bigcirc \frac{3}{3}$$

$$\text{f) } \frac{2}{3} \bigcirc \frac{6}{9}$$

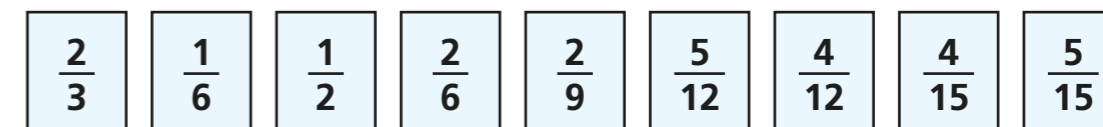
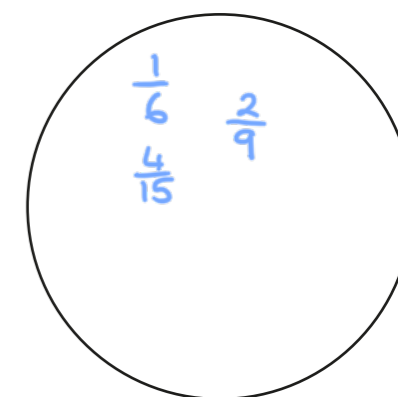
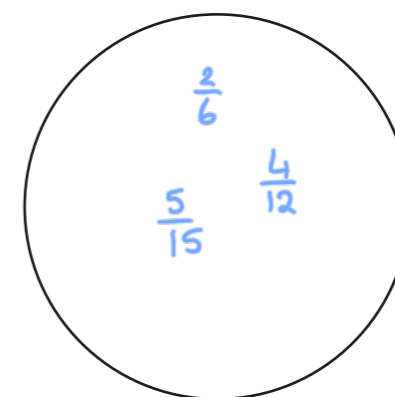
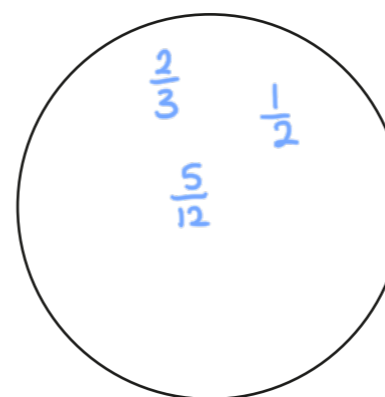
$$\text{l) } \frac{8}{12} \bigcirc \frac{3}{4}$$

3 Sort the fractions into the circles.

greater than $\frac{1}{3}$

equal to $\frac{1}{3}$

less than $\frac{1}{3}$



- 4 What could the missing numerators and denominators be?

Write a number in each box to make the statements correct.

a) $\frac{\boxed{}}{5} < \frac{5}{15}$

d) $\frac{\boxed{}}{3} < \frac{5}{6}$

g) $\frac{6}{9} < \frac{5}{\boxed{}}$

b) $\frac{\boxed{}}{6} < \frac{5}{12}$

e) $\frac{3}{5} < \frac{5}{\boxed{}}$

h) $\frac{10}{12} < \frac{5}{\boxed{}}$

c) $\frac{\boxed{}}{12} < \frac{5}{6}$

f) $\frac{5}{6} < \frac{5}{\boxed{}}$

i) $\frac{23}{24} < \frac{5}{\boxed{}}$

Compare answers with a partner.

- 5 Tommy and Eva are comparing fractions.

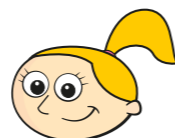
$\frac{2}{3}$ $\frac{8}{12}$ $\frac{4}{9}$



Tommy

I found a common denominator of 36 to compare the fractions.

I found a common numerator of 4 to compare the fractions.



Eva

Whose method is more efficient? _____

Talk about your answer with a partner.

- 6 Write the fractions in ascending order.

a) $\frac{2}{5}, \frac{2}{7}, \frac{2}{3}, \frac{2}{4}, \frac{2}{10}$

b) $\frac{2}{3}, \frac{5}{9}, \frac{1}{9}, \frac{5}{6}, \frac{2}{9}$

c) $\frac{3}{5}, \frac{7}{10}, \frac{1}{2}, \frac{3}{10}, \frac{1}{5}$

d) $\frac{3}{8}, \frac{6}{17}, \frac{12}{30}, \frac{2}{7}, \frac{1}{3}$

- 7 What could the missing numerator be?

$\frac{3}{5} < \frac{\boxed{}}{15} < \frac{9}{10}$

Write all four possibilities.

$\frac{\boxed{}}{15}$ $\frac{\boxed{}}{15}$ $\frac{\boxed{}}{15}$ $\frac{\boxed{}}{15}$